

HX2

Wearable Computer

Microsoft® Windows® CE 5 Operating System

User's Guide

Disclaimer

Honeywell International Inc. ("HII") reserves the right to make changes in specifications and other information contained in this document without prior notice, and the reader should in all cases consult HII to determine whether any such changes have been made. The information in this publication does not represent a commitment on the part of HII.

HII shall not be liable for technical or editorial errors or omissions contained herein; nor for incidental or consequential damages resulting from the furnishing, performance, or use of this material.

This document contains proprietary information that is protected by copyright. All rights are reserved. No part of this document may be photocopied, reproduced, or translated into another language without the prior written consent of HII.

© 2007-2012 Honeywell International Inc. All rights reserved.

Web Address: www.honeywellaidc.com

RFTerm is a trademark or registered trademark of EMS Technologies, Inc. in the United States and/or other countries.

Microsoft® Windows, ActiveSync®, MSN, Outlook®, Windows Mobile®, the Windows logo, and Windows Media are registered trademarks or trademarks of Microsoft Corporation.

Intel® and Intel XScale® are trademarks or registered trademarks of Intel Corporation or its subsidiaries in the United States and other countries.

Summit Data Communications, the Laird Technologies Logo, the Summit logo, and "Connected. No Matter What" are trademarks of Laird Technologies, Inc.

The Bluetooth® word mark and logos are owned by the Bluetooth SIG, Inc.

Symbol® is a registered trademark of Symbol Technologies. MOTOROLA, MOTO, MOTOROLA SOLUTIONS and the Stylized M Logo are trademarks or registered trademarks of Motorola Trademark Holdings, LLC and are used under license.

Wavelink®, the Wavelink logo and tagline, Wavelink Studio™, Avalanche Management Console™, Mobile Manager™, and Mobile Manager Enterprise™ are trademarks of Wavelink Corporation, Kirkland.

Acrobat® Reader © 2012 with express permission from Adobe Systems Incorporated.

Other product names or marks mentioned in this document may be trademarks or registered trademarks of other companies and are the property of their respective owners.

Patents

For patent information, please refer to www.honeywellaidc.com/patents.

Limited Warranty

Refer to www.honeywellaidc.com/warranty_information for your product's warranty information.

Table of Contents

Chapter 1: Introduction	1-1
About this Guide	1-1
End User License Agreement (EULA)	1-1
Laser Warnings and Labels	1-2
Label	1-2
Components	1-3
Front	1-3
Alpha Mode 3 Tap Keypad	1-3
Dual Alpha Keypad	1-3
Triple Tap Keypad	1-4
Back	1-5
Connectors	1-6
Ring Scanner / Audio / Battery Connector	1-6
Cradle Connector	1-6
Ring Scanner and Ring Imager	1-7
Cables	1-7
Battery and HX2 Connector	1-8
Audio, Battery and HX2 Connector	1-8
Ring Scanner Extended Cable	1-8
Li-Ion Battery	1-9
Battery Connectors	1-9
Standard Battery	1-9
Extended Battery	1-9
Status LEDs	1-10
System Status LED	1-10
Alpha mode Status LED	1-10
Bluetooth Status LED	1-10
Using the Input Panel / Virtual Keyboard	1-11
Chapter 2: Set Up A New HX2	2-1
Quick Start - Assembly	2-1
End User License Agreement (EULA)	2-1
Assemble the Armband	2-2
Connect the Ring and Battery Cables	2-3
Battery	2-3
Ring Scanner/Imager	2-4
Attach HX2, Ring and Battery to Armband	2-4
Final Assembly	2-5
Attach Ring to Finger	2-6

Voice Case Assembly.....	2-7
Slip the HX2 into the Rubber Boot.....	2-9
Assemble the HipFlip.....	2-10
Connecting the Headset Cable.....	2-11
Adjust Headset / Microphone and Secure Cable.....	2-12
Connect / Disconnect Battery.....	2-13
Connect Battery.....	2-13
Disconnect Battery.....	2-13
Tapping the Touch Screen with a Stylus.....	2-14
Set Date and Time Zone.....	2-15
Grab Time Utility.....	2-15
Autolaunch Time-Sync.....	2-15
Synchronize with a Local Time Server.....	2-15
Set Speaker Volume.....	2-16
Using the Keypad.....	2-16
Using the Control Panel.....	2-16
Set Power Scheme Timers.....	2-17
Battery Power Scheme.....	2-17
AC Power Scheme.....	2-17
Touch Screen.....	2-18
Calibrating the Touch Screen.....	2-18
Adjusting the Display Backlight Timer.....	2-18
Apply the Touch Screen Protective Film.....	2-18
Setup Terminal Emulation Parameters.....	2-19
Using the AppLock Switchpad.....	2-20
Using the Keypad.....	2-20
Using the Touch Screen.....	2-20
Connecting Bluetooth Devices.....	2-21
Taskbar Connection Indicator.....	2-21
LED Connection Indicator.....	2-21
Reboot.....	2-22
Warm Boot.....	2-22
Cold Boot.....	2-22
Cleaning the Touch Screen and Scanner Aperture.....	2-23
Startup Help.....	2-24
Continuous Scan Mode.....	2-24
Chapter 3: Product Agency Compliance - HX2.....	3-1
Laser Light Safety Statement.....	3-3
Important Safety Warnings - Desktop Cradle.....	3-5



Chapter 1: Introduction

The HX2 is a small, lightweight mobile computer designed to be worn on a person's arm or waist. The HX2 is most useful for applications that require computational support while the user's hands are actively engaged with the physical environment, including piece picking to carts, containers or conveyers; case picking; parcel moves; and broken case activities.

The HX2 can be docked in the HX2 Cradle. The HX2 batteries can be re-charged while the HX2 is in the cradle. The batteries are also re-charged in the HX2 Battery Charger. When the HX2 is docked in a powered cradle, connection is broken between the tethered battery and the HX2. The HX2 begins receiving power through the powered cradle connector. It may be necessary to wake the HX2 from Suspend when it is inserted in the cradle.

Pictures show ring scanner or ring imager that are not available in all markets. Imagens mostram anel scanner ou imager de anel que não estão disponíveis em todos os mercados.

About this Guide

This HX2 User's Guide provides instruction for the end-user or system administrator to follow when setting up a new HX2.

This user's guide has been developed for a HX2 with a Microsoft® Windows® CE 5 operating system.

End User License Agreement (EULA)

When a new HX2 starts up a EULA is displayed on the touch screen. It remains on the screen until the Accept or Decline button is tapped with a stylus.

Tap the Accept button to accept the EULA terms and the HX2 continues the startup process. The EULA is not presented to the user again.

Tap the Decline button to decline the EULA and the HX2 will reboot. It will continue to reboot until the Accept button is tapped with the stylus.

Note: The EULA will be presented after any operating system upgrade or re-installation, including language-specific operating systems.

Laser Warnings and Labels

- Do not look into the laser's lens.
- Do not stare directly into the laser beam.
- Do not remove the laser caution labels from the HX2.
- Do not connect the laser bar code aperture to any other device. The laser bar code aperture is certified for use with the HX2 only.

Caution

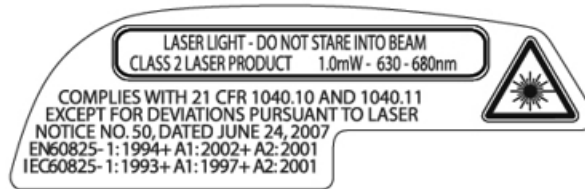


Laser radiation when open. Please read the caution labels. Use of controls, adjustments or performance of procedures other than those specified herein may result in hazardous radiation exposure.

Ring Scanner and Ring Imager Caution Label – Class 2 Laser Scanner

The laser light label is located on the side of the ring scanner and ring imager.

Label

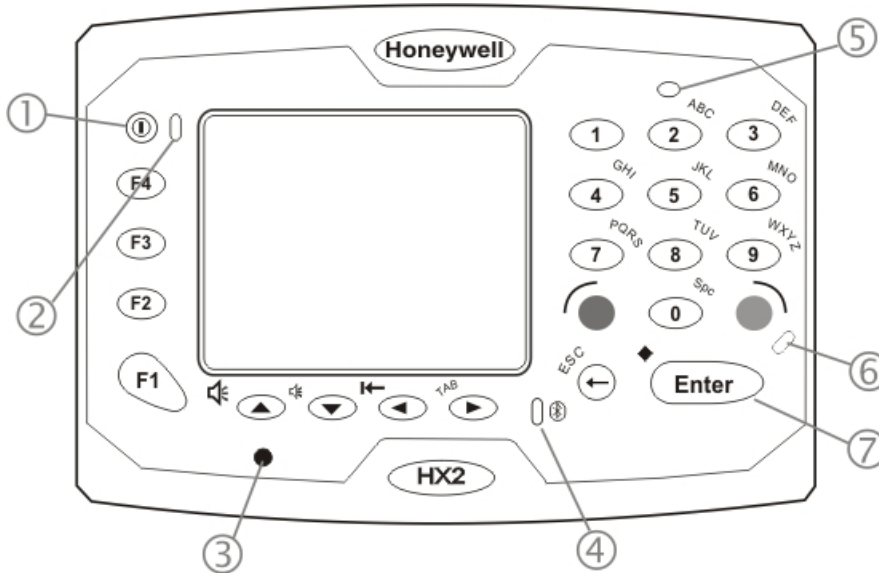


Components

Front

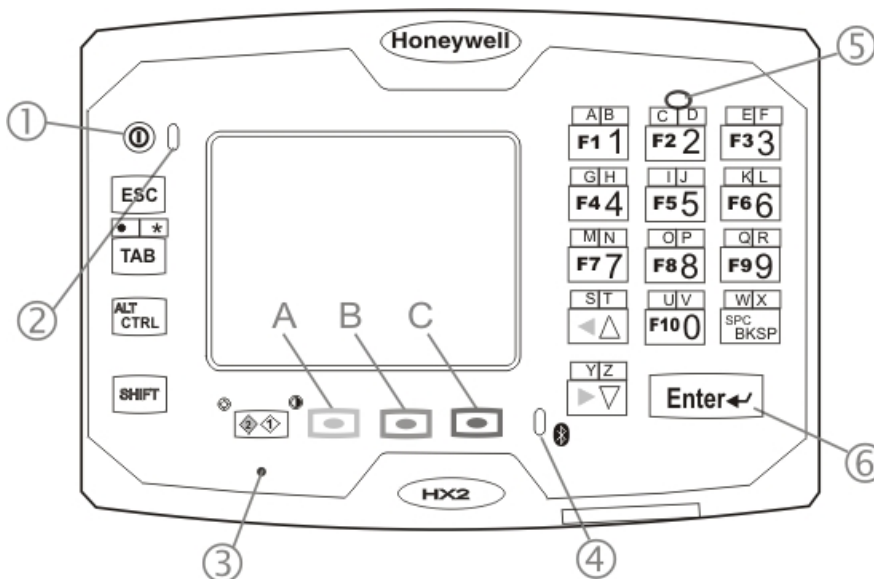
Note: Alpha Mode LED is not used with the Dual Alpha Keypad and the Triple Tap Keypad.

Alpha Mode 3 Tap Keypad



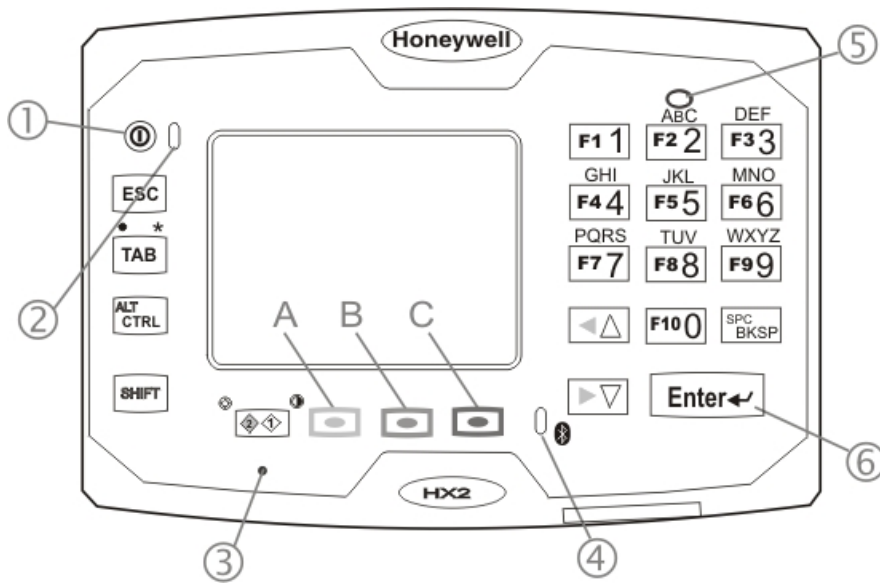
1. On / Off Button
2. System Status LED
3. Microphone
4. Bluetooth LED
5. Speaker
6. Alpha Mode LED
7. Enter Button

Dual Alpha Keypad



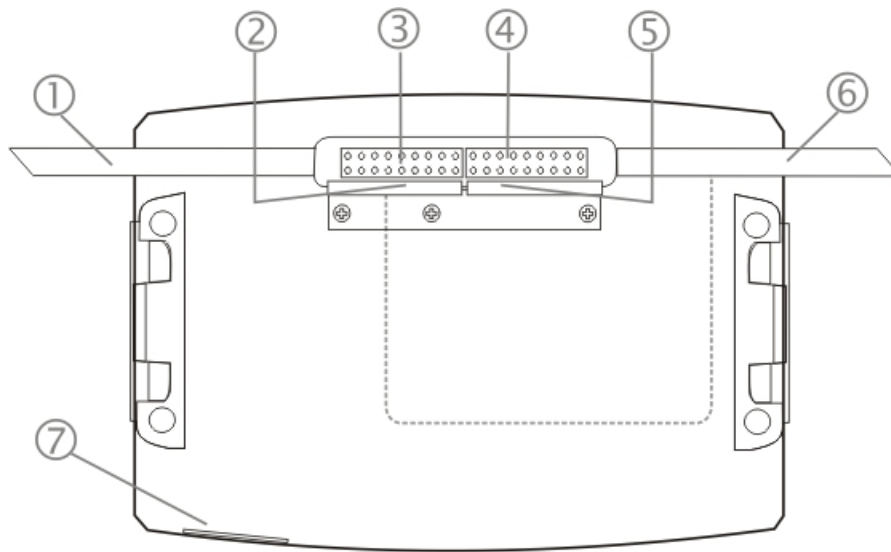
1. On / Off Button
 2. System Status LED
 3. Microphone
 4. Bluetooth LED
 5. Speaker
 6. Enter Button
- A. Green Button
B. Orange Button
C. Blue Button

Triple Tap Keypad



1. On / Off Button
 2. System Status LED
 3. Microphone
 4. Bluetooth LED
 5. Speaker
 6. Enter Button
- A. Green Button
B. Orange Button
C. Blue Button

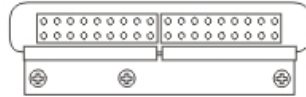
Back



Wear on Left Side, Ring on Left Hand	Wear on Right Side, Ring on Right Hand
<ul style="list-style-type: none">1. Ring Scanner Tether cable channel2. Retaining Clip for Ring Scanner Tether Connector3. Ring Scanner cable connector4. Battery Cable connector5. Retaining Clip for Tethered Battery Connector6. Tethered Battery Cable channel7. Cradle Connector	<ul style="list-style-type: none">1. Tethered Battery Cable channel2. Retaining Clip for Tethered Battery Connector3. Battery Cable connector4. Ring Scanner cable connector5. Retaining Clip for Ring Scanner Tether Connector6. Ring Scanner Tether cable channel7. Cradle Connector

Connectors

Ring Scanner / Audio / Battery Connector



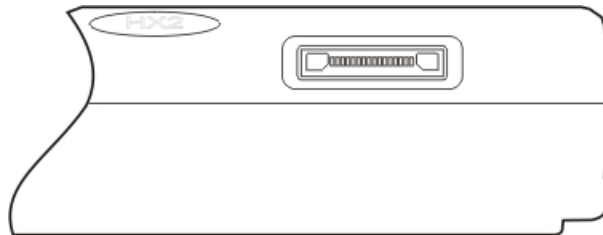
Connector 1 is on the left.

Connector 2 is on the right.

Both connectors attach to cables for:

- Tethered Ring Scanner (Laser or Imager)
- Tethered Headset / Microphone and Battery
- Tethered Battery

Cradle Connector



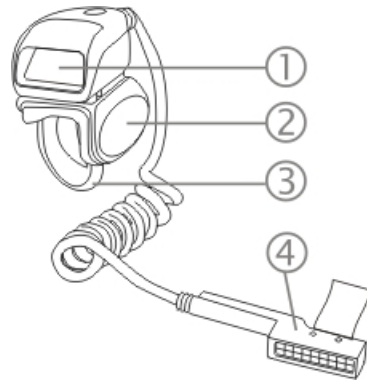
Connector 3 is at the base of the HX2. It connects to the Cradle. When the HX2 is in a powered cradle, the HX2 receives external power through the Cradle connector.

USB Keyboard or USB Mouse input is received through the Cradle connector when the HX2 is in the HX2cradle.

Ring Scanner and Ring Imager

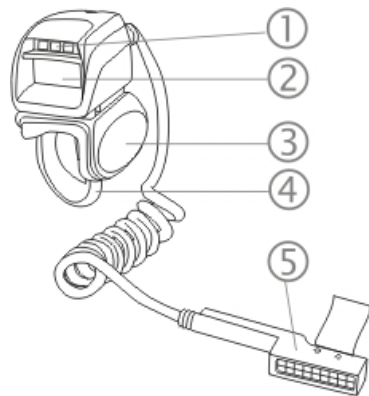
The trigger module and ring strap module are user replaceable.

Laser Scanner



1. Scan Window
2. Trigger
3. Ring Strap
4. Connector

Laser Imager

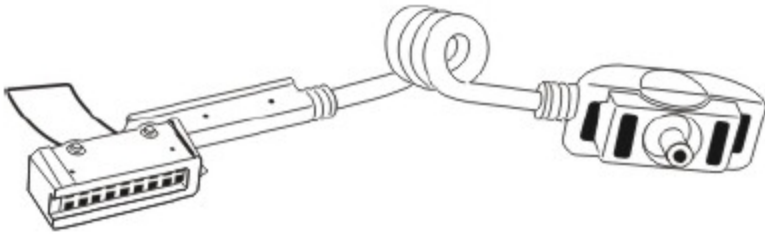


1. Illumination LEDs
2. Scan Window
3. Trigger
4. Ring Strap
5. Connector

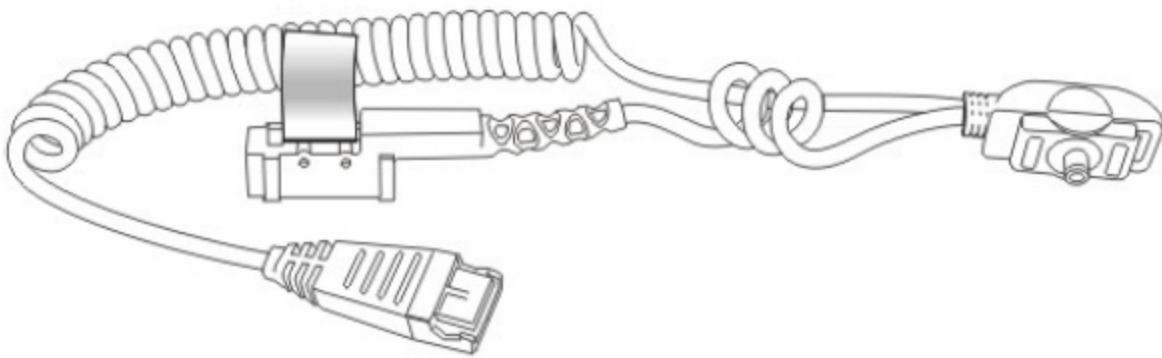
Cables

Pictures show ring scanner or ring imager that are not available in all markets. Imagens mostram anel scanner ou imager de anel que não estão disponíveis em todos os mercados.

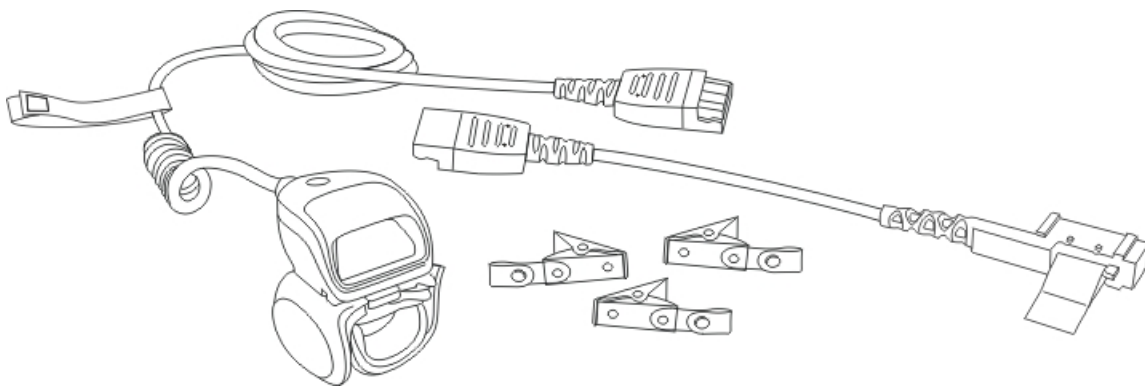
Battery and HX2 Connector



Audio, Battery and HX2 Connector



Ring Scanner Extended Cable



Li-Ion Battery

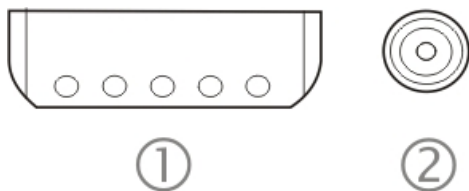
Main battery charging is handled exclusively by the HX2 Battery Charger/analyzer and the battery charger integrated into the HX2powered cradle.

The Standard battery is much thinner than the Extended battery.

Each battery will fit in the battery sleeve on an armband, hip flip and the voice case.

Note: Do not allow water or chemical cleaning agents of any kind to come in contact with the battery charging contacts or the battery cable connector; they may be damaged. If necessary, clean them with a soft-bristle, dry brush or compressed air.

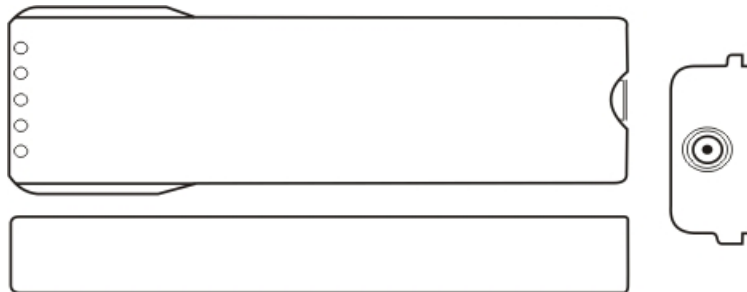
Battery Connectors



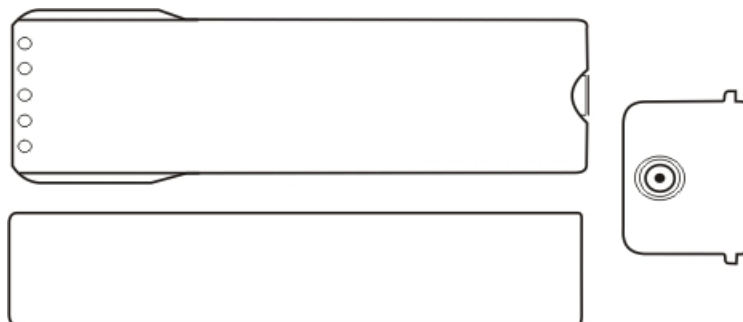
1. Battery Charge/Connect Terminals
2. Battery Cable Connector

Note: When placing the tethered battery in an armband or hip flip battery sleeve, ensure the Battery Charge/Connect terminals are protected from accidental damage by keeping them covered by the sleeve fabric at all times.

Standard Battery



Extended Battery



Status LEDs

LEDs (Light Emitting Diodes) are located on the front of the HX2. They are:

1. **System Status LED** indicates power management status.
2. **Alpha Mode Status LED** applies to the Alpha Mode 3 tap keypad only.
3. **Bluetooth Status LED** applies to Bluetooth client functions.

System Status LED

Blinking Red	Main battery power fail; critical suspend mode
Steady Red	Main battery low. If the main battery is not replaced with a fully charged battery before the internal battery fails, the HX2 is turned Off.
Blinking Green	Display turned off.
Off	HX2 is Off (both batteries depleted) or the HX2 is in Suspend mode

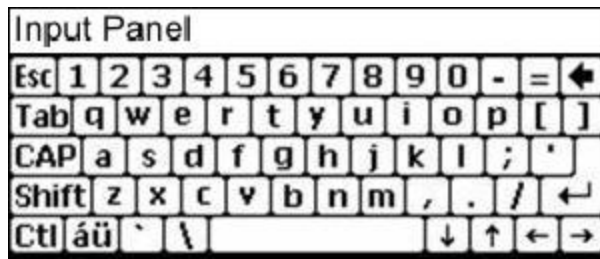
Alpha mode Status LED

- Steady Amber when alpha mode enabled.

Bluetooth Status LED

Blinking Slowly	Bluetooth is paired but not connected to a device.
Blinking Medium	Bluetooth is paired and connected to a device.
Blinking Fast	Bluetooth is discovering Bluetooth devices.
Off	Bluetooth hardware has been turned off or it does not exist in the HX2.

Using the Input Panel / Virtual Keyboard



The virtual keyboard is always available when needed e.g., text entry.

Place the cursor in the text entry field and, using the stylus:

- Tap the Shift key to type one capital letter.
- Tap the CAPS key to type all capital letters.
- Tap the áü key to access symbols.

Some applications do not automatically display the Input Panel. In this case, do the following to use the Input Panel:



Input Panel icon in the taskbar



Keyboard icon in the taskbar

- Tap the Input Panel or Keyboard icon in the taskbar.
- Select **Keyboard** from the menu.
- Move the cursor into the text entry field when you want to enter data using the Input Panel.

When finished entering data, tap the icon in the Taskbar again. Select **Hide Input Panel**.



Chapter 2: Set Up A New HX2

This page lists a quick outline of the steps you might take when setting up a new HX2. More instruction for each step is listed later in this guide. Please refer to the *HX2 Reference Guide* for additional information and instruction.

Contact [Technical Assistance](#) if you need additional help.

Note: Installing or removing accessories should be performed on a clean, well-lit surface. When necessary, protect the work surface, the HX2, and components from electrostatic discharge.

Quick Start - Assembly

Fasten the armband to your left or right arm before continuing with these directions.

1. Slide the battery into the battery sleeve on the armband.
2. Snap all tethered devices to the connectors at the back of the HX2.
3. Snap the HX2 into the armband mounting bracket.
4. Attach the battery cable to the battery.
5. Connect audio devices, if included.
6. Slip the ring scanner (if included) over one of your fingers, making sure your thumb or trigger finger can easily reach the Scan button.
7. Adjust the HX2 arm assembly for comfort. Occasionally check all connectors for stability.

The wearable computer is ready for use.

End User License Agreement (EULA)

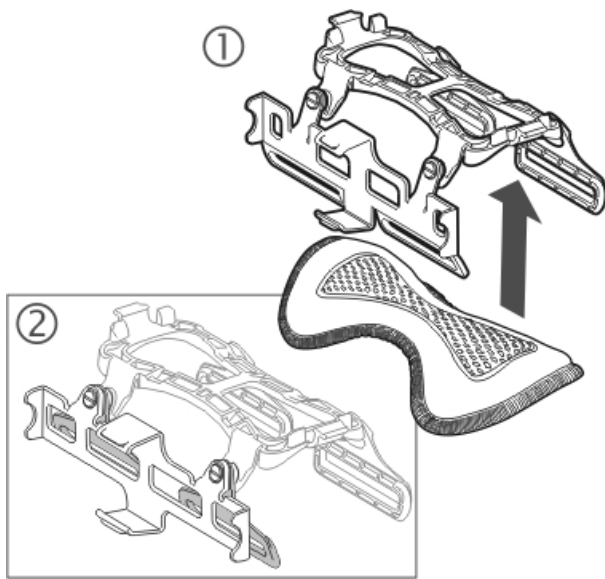
When a new HX2 starts up a EULA is displayed on the touch screen. It remains on the screen until the Accept or Decline button is tapped with a stylus.

Tap the Accept button to accept the EULA terms and the HX2 continues the startup process. The EULA is not presented to the user again.

Tap the Decline button to decline the EULA and the HX2 will reboot. It will continue to reboot until the Accept button is tapped with the stylus.

Note: The EULA will be presented after any operating system upgrade or re-installation, including language-specific operating systems.

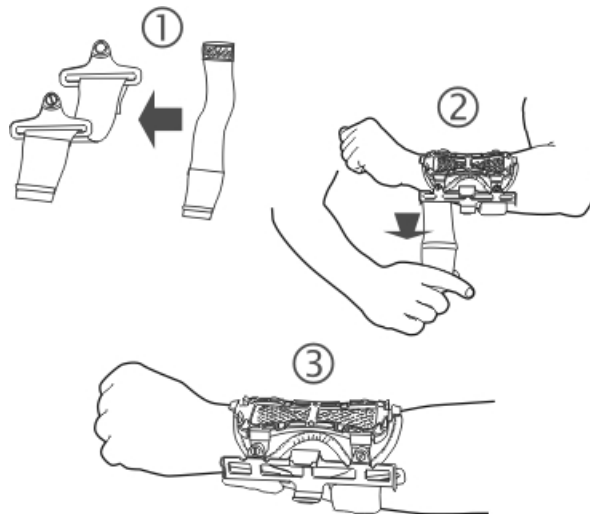
Assemble the Armband



1. Armband style 1
2. Armband style 2

Press the Removable Mesh Arm Cover to the underside of the armband.

Slide the arm straps through the arm strap brackets.

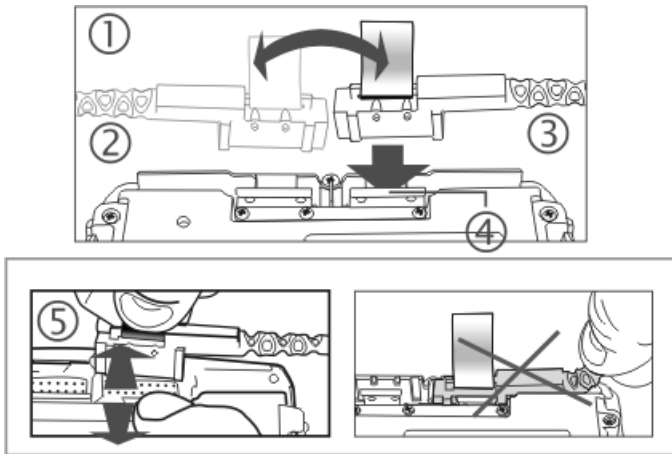


Connect the Ring and Battery Cables

The battery cable and the ring scanner/imager cable should not be exchanged or replaced in a dirty, harsh or hazardous environment. When the tethers are disconnected, any dust or moisture that adheres to the tether connector can potentially cause damage upon cable re-connection.

Battery

Note: The HX2 cannot function unless a battery is securely tethered. Be sure to place the HX2 in Suspend mode before disconnecting a battery, or all unsaved data may be lost.

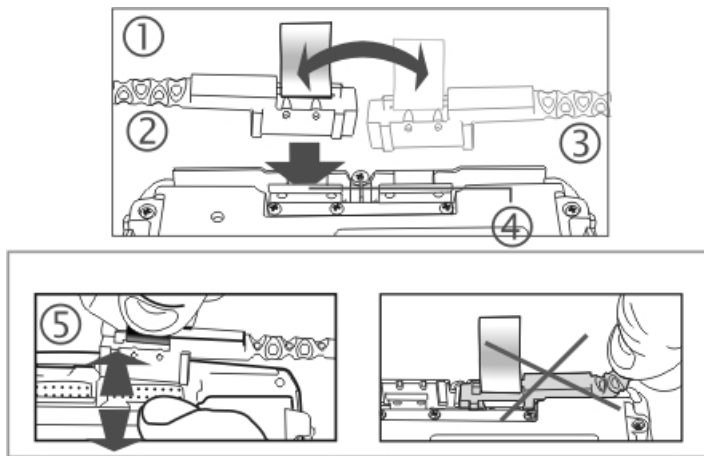


1. **Connect**
2. Right Arm
3. Left Arm
4. Press Down
5. **Remove**

When you want to switch connectors from left to right, or vice versa, first gently press downward on the Retaining Clip, then pinch and pull the cable connector (not the cable!) straight up and away from the HX2. Do not use a metal object, or extreme force, to remove the cable connector from the HX2.

Re-connect cables and reassemble the HX2 body-worn components.

Ring Scanner/Imager

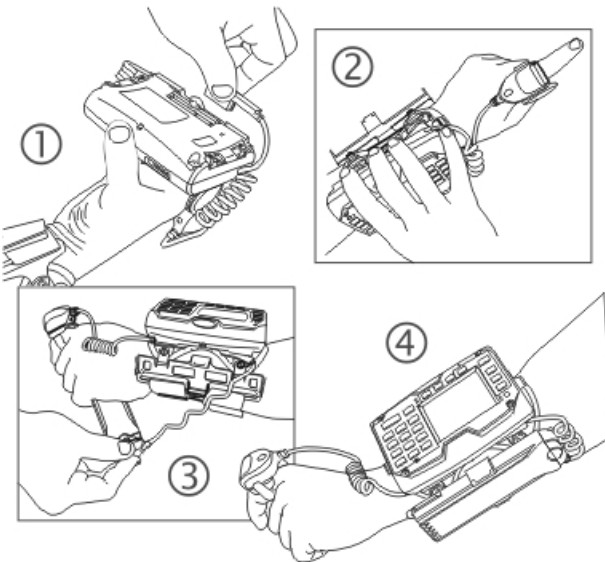


1. **Connect**
2. Ring on Left Hand
3. Ring on Right Hand
4. Press Down
5. **Remove**

When you want to switch connectors from left to right, or vice versa, first gently press downward on the Retaining Clip, then pinch and pull the cable connector (not the cable!) straight up and away from the HX2. Do not use a metal object, or extreme force, to remove the cable connector from the HX2.

Re-connect cables and reassemble the HX2 body-worn components.

Attach HX2, Ring and Battery to Armband

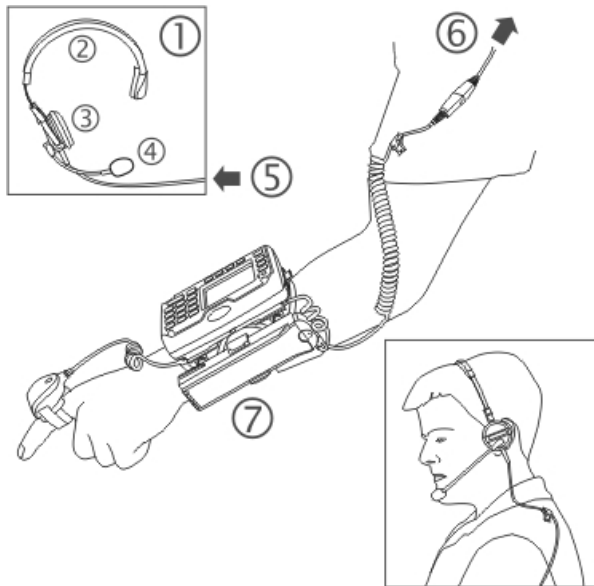
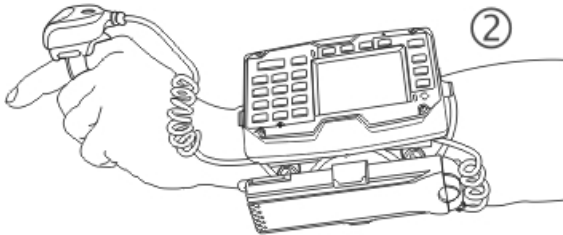


1. Connect ring and battery cables
2. Mount assembly on arm and ring on finger
3. Plug battery into cable attached to HX2
4. Final assembly

Final Assembly



1. Right Hand Configuration
2. Left Hand Configuration



1. **Headset**
2. Headband
3. Earpiece
4. Microphone
5. **Headset Cable**
6. **Headset Cable**
7. **Battery**

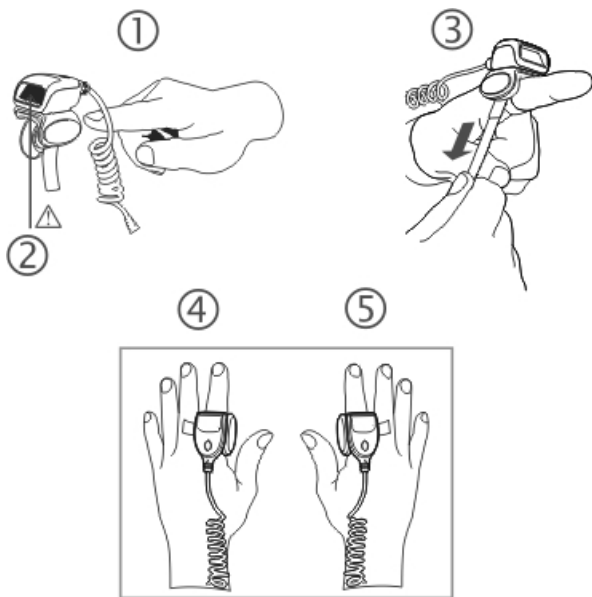
Attach Ring to Finger

The ring finger loop is located under the ring assembly.

Pull gently on the end of the finger loop strap to separate the hook and loop fabric. Slide your finger into the opened loop under the ring scanner. Grasp the end of the finger loop strap and loosen, then tighten, the finger strap until the ring scanner is comfortably snug and the scan aperture is secured in the desired location.

The ring scanner has a built-in quick disconnect designed for occasional safety hazards. It is not intended for frequent, normal removal of the ring scanner from the hand.

Note: Do not touch, push against or brace your finger on the scan aperture at any time.



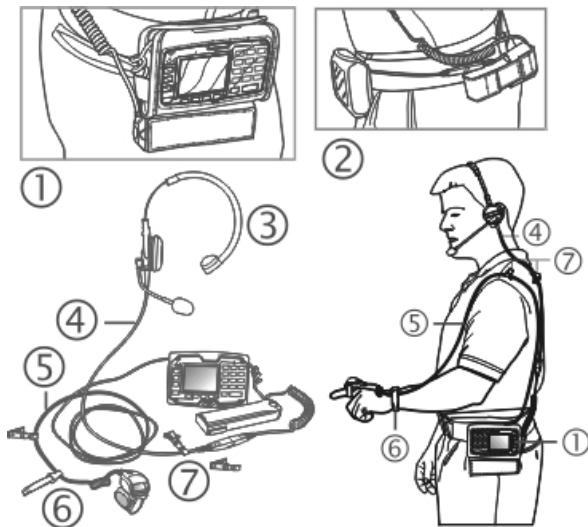
1. Slide finger into opened loop
2. Remove shipping film on scan aperture before first scan
3. Tighten the finger loop strap
4. Ring worn on left hand
5. Ring worn on right hand

Voice Case Assembly

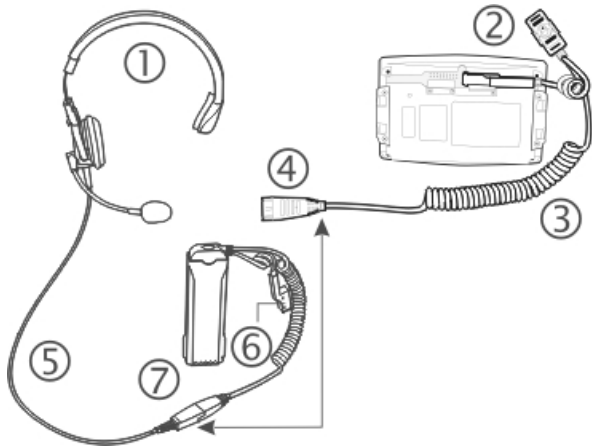
The voice case is a sturdy, lightweight covering for the HX2, tethered battery, and voice accessories. The voice case cannot protect the HX2 from destructive, excessive force or a harsh or wet environment. It is designed to protect the HX2 from dirt, dampness, and minor, trivial bumps.

1. Slide the belt through the belt loop on the voice case. Do not put the belt on yet.
2. Attach the battery cable, ring scanner and audio headset to the HX2.
3. Slip the HX2 into the voice case. Be sure the screen and keypad are visible through the clear window of the voice case.
4. Slide the battery cable through the protective loop at the bottom of the voice case. Make sure the tethered cable for the ring accessory is on the outside of the voice case.
5. Slip the battery into the battery sleeve and connect the battery to the battery cable. The battery charge terminals (small metallic circles) should always be covered by the sleeve.
6. Press the hook and loop fabric at the top of the device together.
7. The HX2 in the Voice Case is ready for use.
8. Put the belt on. Adjust the belt and voice case for comfort.

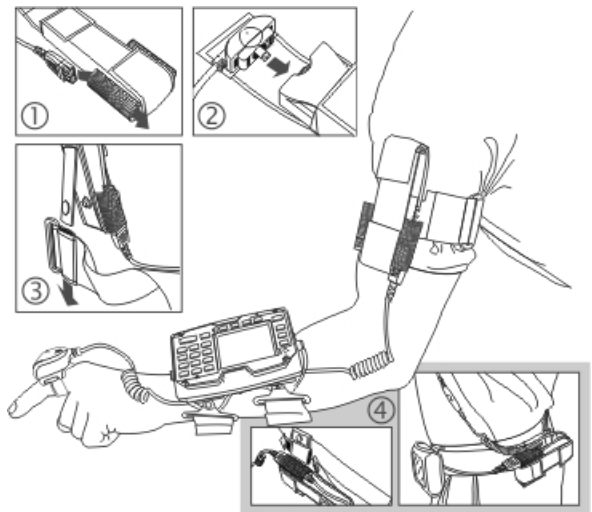
Examine the tethers and the hook and loop fabric fastening periodically. If any are loose or unfastened, tighten the tethers and the top fastener before placing the voice case back into service. If the voice case is damaged, it should be removed from service.



1. Voice Pouch
2. Alternative Battery Placement
3. Headset
4. Audio Cable
5. Ring Scanner Extended Cable
6. Wrist Strap
7. Clothing Clips



1. Headset
2. To Battery
3. Audio Cable
4. To Headset Cable
5. Headset Cable
6. To HX2
7. Battery



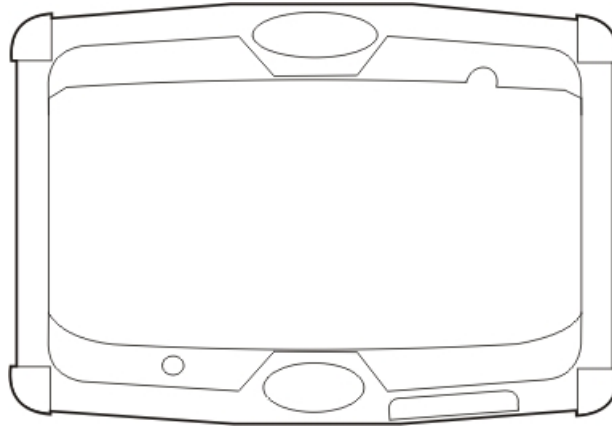
- 1,2,3 - Battery Case and Cable Assembly
 4 - Alternative Placement

Slip the HX2 into the Rubber Boot

The rubber boot is a lightweight, flexible covering for the HX2 housing. The rubber boot cannot protect the HX2 from destructive, excessive force. It is designed to protect the HX2 housing from minor, trivial bumps or jostling.

The rubber boot does not inhibit tethered devices, cradle docking, Hip Flip assembly or Armband assembly.

Remove the rubber boot when placing the HX2 in a voice case. The rubber boot slips over the front and halfway down the sides of the HX2, leaving the touch screen, keypad, logo and the HX2 logo visible.



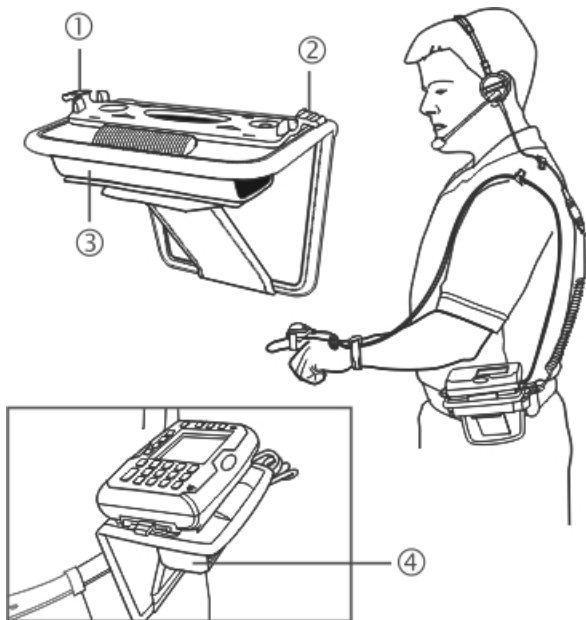
Gently stretch the rubber boot over each corner of the front housing until the rubber boot is snug. It can be removed for cleaning, if necessary. Smaller openings are available in the rubber boot to

- allow access to the cradle connector on the bottom of the HX2
- allow audible signals from the internal speaker to be heard
- and allow audible signals to be sent through the internal microphone.

Assemble the HipFlip

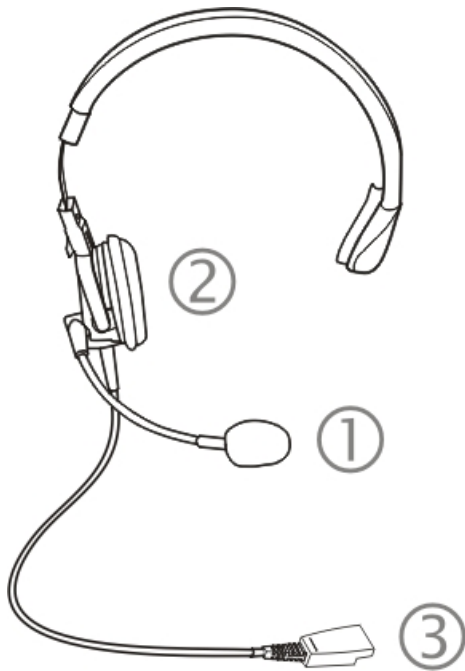
The hip flip may be pre-assembled by Honeywell.

1. Unpack the Hip Flip.
2. Slide the belt through the loops on the Hip Flip. Do not put the hip flip on yet.
3. Slide the battery into the battery sleeve on the hip flip.
4. Snap all tethered devices to the connectors at the back of the HX2.
5. Snap the HX2 into the hip flip mounting brackets.
6. Attach the battery cable to the battery.
7. Put the hip flip on.
8. Slip the ring scanner (if included) over one of your fingers, making sure your thumb or trigger finger can easily reach the scan button.
9. Adjust the HX2 hip assembly for comfort. Occasionally check all connectors for stability.



1. HX2 Mounting Bracket
2. HX2 Mounting Bracket
3. Battery Sleeve
4. Battery

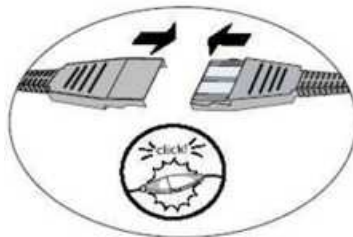
Connecting the Headset Cable



Headset

1. Microphone
2. Headphones
3. Connects to voice cable end of voice cable

Connect the HX2 voice cable I/O connector to the I/O port on the HX2. The HX2 internal microphone and speaker are automatically disabled.



Slide the voice cable ends together until they click shut. Do not twist or bend the connectors.

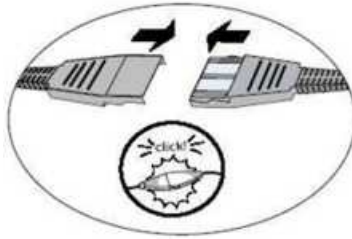
The HX2 is ready for voice-enabled applications.

Adjust Headset / Microphone and Secure Cable



The headset consists of an earpiece, a microphone, a clothing clip and a cable. The headset attaches to the audio cable end of the voice cable which attaches to the HX2.

Align the audio connector and the headset quick connect cable end. Firmly push the cable ends together until they click and lock in place.



Do not twist the microphone boom when adjusting the microphone. The microphone should be adjusted to be about two finger widths from your mouth.

Make sure the microphone is pointed at your mouth. Note the small "Talk" label near the mouthpiece. Make sure the Talk label is in front of your mouth. The microphone cable can be routed over or under clothing.

Under Clothing

- Leave the cable exposed only at the top of the collar.
- Be sure to leave a small loop of cable to allow movement of your head.

Over Clothing

- Use clothing clips to hold the cable close to your body.
- Tuck the cable under the belt, but leave a small loop where it goes under the belt.
- Do not wear the cable on the front of your body. It may get in your way or get caught on protruding objects.

Connect / Disconnect Battery

Note: The HX2 will not function unless a battery is securely tethered. When the HX2 is placed in a powered cradle, the connection between the tethered battery and the HX2 is broken, and the HX2 is receiving power through the cradle-HX2 connector.

Be sure to place the unit in Suspend Mode before removing the battery. Failing to properly place the device in Suspend mode will result in a loss of all unsaved data.

An HX2 will retain data, while the main battery is removed and replaced with a fully charged main battery, for 5 minutes.

Important: When the internal battery power is Low or Very Low connect the AC adapter to the HX2 before replacing the main battery.

Note: The battery should not be replaced in a dirty, harsh or hazardous environment. When the battery is not connected to the HX2, any dust or moisture that enters the battery well or connector may transfer to the battery/well terminals, potentially causing damage.

Warning. Only use Honeywell batteries as replacements: HX2A301BATTSTD / 160289-0001 or HX2A302BATTEXT / 160320-0001

Connect Battery

To connect the main battery, complete the following steps:

1. Hold the battery with one hand with the connector facing up.
2. With the other hand, press the battery cable connector down onto the battery connector, making sure the connectors line up.

The HX2 draws power from the battery immediately upon successful connection.

Check battery status by tapping the **Start > Settings > Control Panel > Battery** icon. Main battery level, internal battery level, status and other details are displayed.

Disconnect Battery

To remove the battery cable from the HX2, first press downward on the Retaining Clip, then pinch and pull the cable connector straight up and away from the HX2. Do not use a metal object, or extreme force, to remove the cable connector from the HX2. Re-connect cables and reassemble the HX2 body-worn components.

Place the discharged battery pack in a powered battery charger.

Tapping the Touch Screen with a Stylus

Note: Always use the point of the stylus for tapping or making strokes on the touch screen.

Never use an actual pen, pencil, or sharp/abrasive object to write on the touch screen.

Hold the stylus as if it were a pen or pencil. Touch an element on the screen with the tip of the stylus then remove the stylus from the screen.

Firmly press the stylus into the stylus holder when the stylus is not in use.

Using a stylus is similar to moving the mouse pointer then left-clicking icons on a desktop computer screen.

Using the stylus to tap icons on the touch screen is the basic action that can:

- Open applications
- Choose menu commands
- Select options in dialog boxes or drop-down boxes
- Drag the slider in a scroll bar
- Select text by dragging the stylus across the text
- Place the cursor in a text box prior to typing in data
- Place the cursor in a text box prior to retrieving data using a scanner/imager or an input/output device connected to a serial port.

A right-click can be simulated by touching the touch screen with the stylus and holding it for a short time.

A stylus replacement kit is available.

Set Date and Time Zone

Tap **Start > Settings > Control Panel > Date/Time** icon or tap the Date/Time in the taskbar.

Set Date, Time, Time Zone, and assign a Daylight Savings location on the HX2 after a warm boot or anytime.

There is very little functional change from standard desktop PC Date/Time Properties options. Adjust the settings and tap the OK button or the Apply button to save changes to the registry. Any changes take effect immediately.

Double-tapping the time displayed in the Taskbar causes the Date/Time Properties screen to appear.

Grab Time Utility

The GrabTime utility can be configured to synchronize the time with a local server during each reboot function.

Tap the Sync button to synchronize date and time with a networked time server. By default, the HX2 operating system first searches for a time server on the local intranet. If not found, it then searches the Internet for a time server. A connection to the Internet is required for this option.

Autolaunch Time-Sync

Start > Settings > Control Panel > HX2 Options > Communication tab

By default, TimeSync does not automatically run on the HX2. To enable TimeSync to run automatically on the HX2 using the GrabTime utility, check this checkbox.

Synchronize with a Local Time Server

By default, GrabTime synchronizes via an Internet connection. To synchronize with a local time server:

1. Use ActiveSync to copy GrabTime.ini from the My Device > Windows folder on the HX2 to the host PC.
2. Edit the copy of GrabTime.ini on the host PC. Add the local time server's domain name to the beginning of the list of servers. You can optionally delete the remainder of the list.
3. Copy the modified GrabTime.ini file to the My Device > System folder on the HX2. The System/GrabTime.ini file takes precedence over the Windows/GrabTime.ini file. System/Grabtime.ini also persists after a coldboot; Windows/Grabtime.ini does not persist.

Set Speaker Volume

The speaker is on the front, above the 2 key.

Speaker volume can be adjusted to a comfortable level for the listener by using the keypad or by changing parameters in the Volume & Sounds control panel.

Using the Keypad

Note: Volume & Sounds (in Settings > Control Panel) must be enabled before the following key sequences can adjust the volume.

The volume is increased or decreased one step each time the volume key sequence is pressed.

To adjust speaker volume:

- **Blue+Up Arrow** and **Blue+Down Arrow** keys on the Alpha Mode 3 Tap keypad.
- **Orange+Diamond 1+Up Arrow** and **Orange+Diamond+Down Arrow** keys on the Dual Alpha and Triple-Tap keypads.
- Press any key, except the keys you used to adjust the volume, to exit.

Volume control using a keypad key press has six volume settings that match those supported by the Volume and Sounds Control panel. Volume does not “roll-over” from minimum to maximum or from maximum to minimum. Continuously holding down the up or down arrow keys does not cause an automatic repeat of the up (or down) arrow key.

Using the Control Panel

Tap **Start > Settings > Control Panel > Volume & Sounds > Volume** tab. Change the volume setting and tap OK to save the change.

You can also select / deselect sounds for key clicks and screen taps and whether each is loud or soft.

As the volume scrollbar is moved between Loud and Soft, the HX2 emits a tone each time the volume increases or decreases.

Set Power Scheme Timers

Start > Settings > Control Panel > Power > Schemes

Change the parameter values and tap OK to save the changes.

User Idle	An amount of time has passed, set by the User Idle timer, and the device shuts down a minimum number of services e.g., backlights. The System Idle timer and the Suspend timer have not expired yet.
System Idle	An amount of time has passed, set by the System Idle timer, and the device shuts down a few more services e.g., display. The User Idle timer has expired and the Suspend timer has not expired yet.
Suspend	Suspend mode is entered when (1) the unit is inactive for a predetermined period of time, (2) the user taps the Power key, or (3) Start > Suspend is chosen. Inactivity means that internal devices that reset the power state are not active.

Battery Power Scheme

Use this option when the HX2 will be running on battery power only.

Switch state to User Idle	Default is After 3 seconds
Switch state to System Idle	Default is After 15 seconds
Switch state to Suspend	Default is After 5 minutes

AC Power Scheme

Use this option when the HX2 will be running on external power (e.g., connected to an A/C power source).

Switch state to User Idle	Default is After 2 minutes
Switch state to System Idle	Default is After 2 minutes
Switch state to Suspend	N/A

The timers are cumulative. The System Idle timer begins the countdown after the User Idle timer has expired and the Suspend timer begins the countdown after the System Idle timer has expired. When the User Idle timer is set to "Never", the power scheme timers never place the HX2 in User Idle, System Idle or Suspend modes (even when the HX2 is idle).

Using the Battery Power Scheme Defaults listed above, the cumulative effect results in the following:

- The backlight turns off after 3 seconds of no activity,
- The display turns off after 18 seconds of no activity (15 seconds + 3 seconds),

Touch Screen

Calibrating the Touch Screen

If the touch screen is not responding properly to stylus taps, you may need to recalibrate the touch screen.

Recalibration involves tapping the center of a target. If you miss the center, keep the stylus on the screen, slide it over the target's center, and then lift the stylus.

To recalibrate the screen, select **Start > Settings > Control Panel > Stylus > Calibration** tab.

To begin, tap the Recalibrate button on the screen with the stylus.

Follow the instructions on the screen and press the Enter key to save the new calibration settings or press Esc to cancel or quit.

Adjusting the Display Backlight Timer

Start > Settings > Control Panel > Display > Backlight

The backlight settings use the Honeywell set of default timeouts and are synchronized to the User Idle setting in the Schemes tab in the Power control panel.

When the backlight timer expires, the display backlight is dimmed, not turned off. When both checkboxes are unchecked, the backlight never turns off (or dims).

Default values are 3 seconds for Battery, 2 minutes for External and both the check boxes are enabled.

Apply the Touch Screen Protective Film

First, [clean the touch screen](#) of fingerprints, lint particles, dust and smudges.

Remove the protective film from its container. Remove any protective backing from the film sheet by lifting the backing from a corner of the film. Discard the backing.

Apply the film to the touch screen starting at one side and smoothing it across the display. If air bubbles appear, raise the film slightly and continue smoothing the film across the display until it covers the glass surface of the display. If dust, lint or smudges are trapped between the protective film and the glass display, remove the protective film, clean the display and apply the protective film again.

Contact [Technical Assistance](#) about protective film packs designed specifically for your HX2 touch screen.

Setup Terminal Emulation Parameters

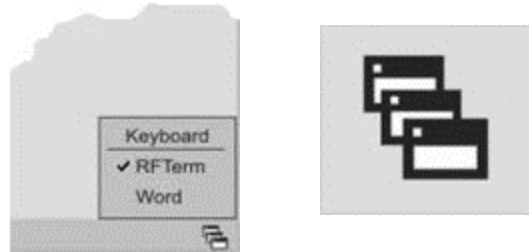
Before you make a host connection, you will, at a minimum, need to know:

- the alias name or IP address (Host Address) and
 - the port number (Telnet Port) of the host system to properly set up your host session.
1. Make sure the mobile client network settings are configured and functional. If you are connecting over wireless LAN (802.11x), make sure your mobile client is communicating with the Access Point.
 2. From **Start > Program**, run **RFTerm** or tap the RFTerm icon on the desktop.
 3. Select **Session > Configure** from the application menu and select the "host type" that you require. This will depend on the type of host system that you are going to connect to; i.e., 3270 mainframe, AS/400 5250 server or VT host.
 4. Enter the "Host Address" of the host system that you wish to connect to. This may either be a **DNS name or an IP address of the host** system.
 5. Update the **telnet port number**, if your host application is configured to listen on a specific port. If not, just use the default telnet port.
 6. Select **OK**.
 7. Select **Session > Connect** from the application menu or tap the "Connect" button on the Tool Bar. Upon a successful connection, you should see the host application screen displayed.

To change options such as Display, Colors, Cursor, Bar Code, etc., please refer to these sections in the *RFTerm Reference Guide* for complete descriptions of these and other features.

Using the AppLock Switchpad

Note: The touch screen must be enabled. Select **Start > Settings > Control Panel > Options > Misc. tab** to verify touch screen status.



Click the switchpad icon in the taskbar.

A checkmark on the switchpad menu indicates applications currently active or available for Launching by the HX2 user. When Keyboard, on the Switchpad Menu, is selected, the default input method (Input Panel, Transcriber, or custom input method) is activated.

Using the Keypad

One switch key sequence (or hotkey) is defined by the Administrator for the end-user to use when switching between locked applications. This is known as the **Activation key**.

When the switch key sequence is pressed on the keypad, the next application in the AppLock configuration is moved to the foreground and the previous application moves to the background. The previous application continues to run in the background. HX2 key presses affect the application in focus only.

Using the Touch Screen

The figure shown above is an example and is shown only to aid in describing how the user can switch between applications using a stylus.

When the user taps the Switchpad icon with the stylus, a menu pops up listing the applications available to the user. The user can tap an application name in the popup menu and the selected application is brought to the foreground. The previous application continues to run in the background. Stylus taps affect the application in focus only. When the user needs to use the Input Panel, they tap the Keyboard option. Input Panel taps affect the application in focus only.

Connecting Bluetooth Devices

Before connecting to Bluetooth Devices:

- The system administrator has discovered, paired, connected and disconnected (using LXEZ Pairing Control Panel) Bluetooth devices for each HX2.
- The system administrator has enabled and disabled LXEZ Pairing parameters for the HX2.
- The system administrator has also assigned a Computer Friendly Name using LXEZ Pairing Control Panel for the HX2.



To connect Bluetooth devices, the HX2 should be as close as possible and in direct line of sight (distances up to 32.8 feet or 10 meters) with the targeted Bluetooth device during the discovery and pairing process.

If the devices are in Suspend, tap the power key to wake the HX2.

Using the correct procedure, wake the targeted Bluetooth device if necessary.

There may be audible or visual signals as both devices discover and pair with each other.

Taskbar Connection Indicator

	HX2 is connected to one or more of the targeted Bluetooth device(s).
	HX2 is not connected to any Bluetooth device. HX2 is ready to connect with any Bluetooth device. HX2 is out of range of all paired Bluetooth device(s). Connection is inactive.

LED Connection Indicator

When the Bluetooth LED on the HX2 is **off**, Bluetooth hardware has been turned off or it does not exist in the HX2.

When the Bluetooth LED on the HX2 is **on**:

- the HX2 is paired with another Bluetooth device but is out of range or not connected, or
- is paired and connected to another Bluetooth device, or
- is discovering other Bluetooth devices.

The Bluetooth LED

- Blinks slowly (Bluetooth LED is on for one second, off for five seconds) when it is idle.
- Blinks quickly (Bluetooth LED is on for 1/4 second, off for 2 seconds) when the HX2 is discovering other Bluetooth devices.
- And blinks normally (Bluetooth LED is on for 1/2 second, off for 1/2 second) when it is connected.

There may be audible or visual signals from paired devices as they move back into range and re-connect with the Bluetooth hardware in the HX2.

Reboot

When the Windows desktop is displayed or an application begins, the power up (or reboot) sequence is complete.

Warm Boot

Start > Run

A warm boot function does not affect the operating system, but data and programs in RAM are cleared, and registry changes, if any, are saved. Network, ActiveSync and Bluetooth connections will need to be re-established.

Tap **Start > Run** and type WARMBOOT.EXE or WARMBOOT. This command is not case sensitive. Tap the OK button. This process takes less than 15 seconds. Temporary data not saved is lost.

Note: There may be slight delays while the wireless client connects to the network, re-authorization for voice-enabled applications completes, Wavelink Avalanche management of the HX2 startup completes, or Bluetooth relationships establish or re-establish.

Cold Boot

Start > Run

The Cold Boot function reboots the device, erases all registry data, and user-specified settings. The factory default settings are restored when the HX2 powers on again.

Tap **Start > Run** and type COLDBOOT.EXE or COLDBOOT. This command [is not case-sensitive](#)¹. Tap the OK button.

Note: Because of the extreme nature of cold boot, Honeywell recommends using this command only as an emergency (or when instructed to do so as part of a specific HX2 procedure).

¹The text typed in the text box can be upper or lower case or a combination of upper and lower case letters.

Cleaning the Touch Screen and Scanner Aperture

Note: These instructions are for components made of glass. If there is a removable protective film sheet on the display, remove the film sheet before cleaning the screen.

Keep fingers and rough or sharp objects away from the bar code reader scanning aperture and the mobile device touch screen.

If the glass becomes soiled or smudged, clean only with a standard household cleaner such as Windex® without vinegar or use Isopropyl Alcohol. Dampen the cloth with the cleaner and then wipe the surface.

Do not use paper towels or harsh-chemical-based cleaning fluids since they may result in damage to the glass surface. Use a clean, damp, lint-free cloth.

Do not scrub optical surfaces. If possible, clean only those areas which are soiled. Lint and particulates can be removed with clean, filtered canned air.

Startup Help

Contact [Technical Assistance](#) if you need more help.

Can't change the date/time or adjust the volume.	AppLock is installed and may be running in User Mode on the HX2. AppLock user mode restricts access to the control panels.
Touch screen is not accepting stylus taps or needs recalibration.	See Also: "Calibrating the Touch Screen" when the touch screen needs recalibration, or Press Ctrl+Esc to force the Start Menu to appear. Use the tab, backtab and arrow keys to move the cursor from element to element.
HX2 seems to lockup as soon as it is rebooted.	There may be slight delays while the wireless client connects to the network, authorization for voice-enabled applications complete, Wavelink Avalanche management of the HX2 startup completes, and Bluetooth relationships establish or re-establish. When the desktop appears or an application begins, the HX2 is ready for use.
New HX2 main batteries don't last more than a few hours.	New batteries must be fully charged prior to first use. Li-Ion batteries (like all batteries) gradually lose their capacity over time (in a linear fashion) and never just stop working. This is important to remember – the HX2 is always 'on' even when in the Suspend state and draws battery power at all times.

Continuous Scan Mode

If Continuous Scan Mode has been enabled (factory default setting is 'Disabled'), the laser (or imager) is always on and decoding.

Caution: Laser beam is emitted continuously. Do not stare into the laser beam.

Chapter 3: Product Agency Compliance - HX2

Class B Digital Device

FCC Rules, Part 15

This device complies with Part 15 of the FCC Rules [and with RSS-210 of Industry Canada]. Operation is subject to the following two conditions:

1. This device may not cause harmful interference, and
2. This device must accept any interference received, including interference that may cause undesired operation.

NOTE: This equipment has been tested and found to comply with the limits for a Class B digital device, pursuant to Part 15 of the FCC Rules. These limits are designed to provide reasonable protection against harmful interference in a residential installation. This equipment generates, uses and can radiate radio frequency energy and, if not installed and used in accordance with the instructions, may cause harmful interference to radio communications. However, there is no guarantee that interference will not occur in a particular installation. If this equipment does cause harmful interference to radio or television reception, which can be determined by turning the equipment off and on, the user is encouraged to try to correct the interference by one or more of the following measures:

- Reorient or relocate the receiving antenna.
- Increase the separation between the equipment and the receiver.
- Connect the equipment into an outlet on a circuit different from that to which the receiver is connected.
- Consult the dealer or an experienced radio/TV technician for help.

Notice

Changes or modifications made to this equipment not expressly approved by Honeywell may void the FCC authorization to operate this equipment.

EMC Directive Requirements

This is a Class B product. In a domestic environment this product may cause radio interference in which case the user may be required to take adequate measures.

Industry Canada

This Class B digital apparatus meets all requirements of the Canadian Interference Causing Equipment Regulations. Operation is subject to the following two conditions: (1) this device may not cause harmful interference, and (2) this device must accept any interference received, including interference that may cause undesired operation.

Cet appareil numérique de la classe B respecte toutes les exigences du Règlement sur le matériel brouilleur du Canada. Le présent appareil numérique n'émet pas de bruits radioélectriques dépassant les limites applicables aux appareils numériques de Classe B prescrites dans le Règlement sur le brouillage radioélectrique édités par le ministère des Communications du Canada.

Waste Electrical and Electronic Equipment (WEEE)



Important:

This symbol is placed on the product to remind users to dispose of Waste Electrical and Electronic Equipment (WEEE) appropriately, per Directive 2002-96-EC. In most areas, this product can be recycled, reclaimed and re-used when properly discarded. Do not discard labeled units with trash. For information about proper disposal, visit www.honeywellaidc.com.

RF Notices

This device contains transmitter Module FCC ID: KDZLXE4830P

RF Safety Notice (Summit Client - 4830)



Caution:

This portable device with its antenna complies with FCC and Industry Canada RF exposure limits set for an uncontrolled environment. This equipment has shown compliance with FCC and Industry Canada Specific Absorption Rate (SAR) limits. Highest reported SAR for the HX2 is 0.641W/kg on body. Any accessories not provided by Honeywell should not be used with this device. This device must not be co-located or operating in conjunction with any other antenna or transmitter.

This device contains transmitter Module FCC ID: KDZLXE4831P

RF Safety Notice (Summit Client - 4831)



Caution:

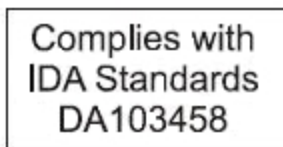
This portable device with its antenna complies with FCC and Industry Canada RF exposure limits set for an uncontrolled environment. This equipment has shown compliance with FCC and Industry Canada Specific Absorption Rate (SAR) limits. Highest reported SAR for the HX2 is 0.333W/kg on body. Any accessories not provided by Honeywell should not be used with this device. This device must not be co-located or operating in conjunction with any other antenna or transmitter.

Bluetooth, Wi-Fi (802.11a) and GSM technology plus the ring scanner accessory will not be available for the Brazil market. HX2 Ring Scanner and Ring Imager are not available in Brazil. HX2 Scanner Anel e Imager Anel não estão disponíveis no Brasil.

R&TTE Directive Requirements



Dealer License - Republic of Singapore



Republic of Singapore - LXE Dealer License Number DA103458 complies with IDA Standards.

Laser Light Safety Statement



Warning: This product uses laser light. One of the following labels is provided on the scanner. Please read the Caution statement. (US)

Mise en garde: Ce produit utilise un rayon laser. L'une des étiquettes suivantes est apposée sur le scanner. Veuillez lire l'avertissement qu'elle contient. (FR)

Advertência: Este produto usa luz de laser. O scanner contém um dos seguintes avisos. Favor ler o Aviso. (PT)

Varning: Denna produkt använder laserljus. En av de nedanstående etiketterna sitter på scannern. Var god läs varningstexten. (SE)

Advarsel: Dette produkt anvender laserlys. En af følgende mærkater anvendes på scanneren. Læs venligst sikkerhedsforanstaltningen. (DK)

Varoitus: Tämä tuote käyttää laservaloa. Skannerissa on jokin seuraavista tarroista. Lue Huomio-kohta. (FI)

Warnung: Dieses Produkt verwendet Laserlicht. Eines der folgenden Etiketten befindet sich auf dem Scanner. Bitte lesen Sie den Gefahrenhinweis. (DE)

Attenzione: Questo prodotto utilizza luce laser. Una delle etichette seguenti c'è ubicata sullo scanner. Si raccomanda di leggere con attenzione le avvertenze riportate. (IT)



















Advarsel: Dette utstyret bruker laserlys. En av følgende etiketter er plassert på scanneren. Les advarselen på etiketten. (NO)

Advertencia: Este producto usa luz de láser. Las etiquetas se proveen en la máquina exploradora. Por favor, lea detenidamente la explicación para las precauciones. (ES)

Waarschuwing: Dit product gebruikt laserlicht. Een van de volgende labels is op de scanner aangebracht. Lees a.u.b. de waarschuwing onder Oppassen. (NL)

<p>Uyarı: Bu ürün lazer ışığı kullanır. Aşağıdaki etiketlerden bir tanesi tarayıcınıza üstünde sağlanacaktır. Lütfen Dikkat ifadesini okuyun. (TR)</p>	<p>Προειδοποίηση: Αυτό το προϊόν χρησιμοποιεί λέιζερ φως. Υπάρχει μία από τις ακόλουθες ετικέτες στο σαρωτή. Παρακαλούμε διαβάστε τη δήλωση με τίτλο Προσοχή. (GR)</p>
<p>경고: 본 제품은 레이저 광선을 사용합니다. 다음 라벨 중 하나가 스캐너에 제공됩니다. 주의 사항을 읽어 주십시오. (KR)</p>	<p>警告: この製品はレーザー光線を使用します。次のラベルのうち1つがスキャナーに貼られています。 注意事項をお読みください。 (JP)</p>
<p>警告: 本产品使用激光。 下列一个标签将随扫描仪一道提供。 请阅读“当心”一栏的内容。 (CN)</p>	

Legend: Chinese – CN; Danish – DK; Dutch – NL; English – US; Finnish – FI; French – FR; German – DE; Greek – GR; Italian – IT; Japanese – JP; Korean – KR; Norwegian – NO; Portuguese – PT; Republic of China – ROC; Spanish – ES; Swedish – SE; Turkish – TR.

ENGLISH	<p>LASER LIGHT - DO NOT STARE INTO BEAM CLASS 2 LASER PRODUCT 1.0mW - 630 - 680nm</p> <p>COMPLIES WITH 21 CFR 1040.10 AND 1040.11 EXCEPT FOR DEVIATIONS PURSUANT TO LASER NOTICE NO. 50, DATED JUNE 24, 2007 EN60825-1:1994+A1:2002+A2:2001 IEC60825-1:1993+A1:1997+A2:2001</p> 	<p>RAYONNEMENT LASER NE PAS REGARDER DANS LE FAISCEAU APPAREIL A RAYONNEMENT LASER DE CLASSE 2 1.0mW - 630 - 680nm</p> <p>EN60825-1:1994+A1:2002+A2:2001 IEC60825-1:1993+A1:1997+A2:2001</p> 	FRENCH
DANISH	<p>LASERLYS KIG IKKE IND I LYSSTRÅLEN KLASSE 2 LASER PRODUKT 1.0mW - 630 - 680nm</p> <p>EN60825-1:1994+A1:2002+A2:2001 IEC60825-1:1993+A1:1997+A2:2001</p> 	<p>LASERSTRAHLUNG NICHT IN DEN STRAHL BLICKEN. LASER KLASSE 2 1.0mW - 630 - 680nm</p> <p>EN60825-1:1994+A1:2002+A2:2001 IEC60825-1:1993+A1:1997+A2:2001</p> 	GERMAN
GREEK	<p>ΠΗΓΗ ΦΩΤΟΣ ΛΑΣΕΡΜΗΝ ΚΟΙΤΑΤΕ ΤΗΝ ΔΕΞΜΗ ΠΡΟΙΟΝ ΛΑΣΕΡ ΚΛΑΣΗΣ 2 1.0mW - 630 - 680nm</p> <p>EN60825-1:1994+A1:2002+A2:2001 IEC60825-1:1993+A1:1997+A2:2001</p> 	<p>RADIAZIONE LASER NON FISSARE IL FASCIO APPARECCHIO LASER DI CLASSE 2 1.0mW - 630 - 680nm</p> <p>EN60825-1:1994+A1:2002+A2:2001 IEC60825-1:1993+A1:1997+A2:2001</p> 	ITALIAN
NORWEGIAN	<p>LASER LYS IKKE SE INN I STRÅLEN KLASSE 2 LASER PRODUKT 1.0mW - 630 - 680nm</p> <p>EN60825-1:1994+A1:2002+A2:2001 IEC60825-1:1993+A1:1997+A2:2001</p> 	<p>LUZ DE LÁSER - NO MIRE DIRECTAMENTE AL HAZ DE LUZ PRODUCTO. LASER DE LA CLASE 2 1.0mW - 630 - 680nm</p> <p>EN60825-1:1994+A1:2002+A2:2001 IEC60825-1:1993+A1:1997+A2:2001</p> 	SPANISH
TURKISH	<p>LAZER RADYASYON ISINA DOĞRU BAKMAYIN. CLASS 2 LAZER URUNU 1.0mW - 630 - 680nm</p> <p>EN60825-1:1994+A1:2002+A2:2001 IEC60825-1:1993+A1:1997+A2:2001</p> 	<p>LASERBESTRALING NIET IN DE LICHTSTRAAL STAREN. KLASS 2 LASER PRODUCT 1.0mW - 630 - 680nm</p> <p>EN60825-1:1994+A1:2002+A2:2001 IEC60825-1:1993+A1:1997+A2:2001</p> 	DUTCH
SIMPLIFIED CHINESE	<p>激光辐射 - 勿直视光束 2类激光产品 1.0mW - 630 - 680nm</p> <p>EN60825-1:1994+A1:2002+A2:2001 IEC60825-1:1993+A1:1997+A2:2001</p> 	<p>LUZ DE LASER NÃO OLHE NO RAIO PRODUTO DE. LASER DE CLASSE 2 1.0mW - 630 - 680nm</p> <p>EN60825-1:1994+A1:2002+A2:2001 IEC60825-1:1993+A1:1997+A2:2001</p> 	PORTUGUESE
JAPANESE	<p>レーザー光線 - 光源を見つめると危険です クラス2レーザー製品 1.0mW - 630 - 680nm</p> <p>EN60825-1:1994+A1:2002+A2:2001 IEC60825-1:1993+A1:1997+A2:2001</p> 	<p>LASERSTRÅLNING STIRRA EJ IN ISTRÅLEN. LASERPRODUKT KLASS 2 1.0mW - 630 - 680nm</p> <p>EN60825-1:1994+A1:2002+A2:2001 IEC60825-1:1993+A1:1997+A2:2001</p> 	SWEDISH
KOREAN	<p>레이저 라이트 빛을 바로 쳐다보지 마십시오. 2종 레이저 상품 1.0mW-630-680nm</p> <p>EN60825-1:1994+A1:2002+A2:2001 IEC60825-1:1993+A1:1997+A2:2001</p> 	<p>VAARA LASERSÄTEILYÄ ÄLÄ TUUJOTA SÄTEESEEN. LUOKAN 2 LASER 1.0mW - 630 - 680nm</p> <p>EN60825-1:1994+A1:2002+A2:2001 IEC60825-1:1993+A1:1997+A2:2001</p> 	FINNISH
TRADITIONAL CHINESE	<p>本產品使用雷射光掃描條碼， 請勿正視雷射 光或以雷射光照射眼睛。 1.0mW - 630 - 680nm</p> <p>EN60825-1:1994+A1:2002+A2:2001 IEC60825-1:1993+A1:1997+A2:2001</p> 	<p>EN60825-1:1994+A1:2002+A2:2001 IEC60825-1:1993+A1:1997+A2:2001</p> 	

Important Safety Warnings - Desktop Cradle

SAVE THESE INSTRUCTIONS

This document contains important safety and operating instructions for the HX2 Desktop Cradle. Please read all instructions and cautionary markings on the Desktop Cradle itself before putting the unit into service.

Safety Alert Symbols



This symbol is used to call your attention to instructions concerning your personal safety. Watch for this symbol – it will alert you to important safety precautions that must be observed to avoid death, personal injury or property damage. Follow the instructions after the warning symbol and be alert to the possibility of personal injury or death.

These signal words provide users with information about the seriousness of the hazard involved:

DANGER	WARNING	CAUTION
Indicates imminent hazards which, if not avoided, WILL result in severe personal injury or death.	Indicates potential hazards which, if not avoided, COULD result in severe personal injury or death.	Indicates hazards or unsafe practices which, if not avoided, COULD result in minor or moderate personal injury or property damage.

SAFETY INSTRUCTIONS

Setting up the Desktop Cradle

Locate or orient the AC cord so that it will not be stepped on, tripped over or subjected to damage or stress.

CAUTION: RISK OF EXPLOSION IF BATTERY IS REPLACED BY AN INCORRECT TYPE.

Analyze or charge only Honeywell HX2A301BATTSTD / 160289-0001 or HX2A302BATTEXT / 160320-0001 Rechargeable Lithium Ion Battery Packs in this Desktop Cradle. Other batteries or battery packs may burst causing injury or property damage.

Operating the Desktop Cradle

Only users who have read and understand all operating instructions are qualified to operate the Desktop Cradle. Failure to read, understand and follow safety instructions may result in injury or death.

Keep the Desktop Cradle away from any heat source. Excessive internal heating can ruin the Desktop Cradle.

Use care when inserting battery. Do not "slam" or slide the battery into the pocket, this could damage the Desktop Cradle.

Keep dirt and foreign objects out of the battery pocket. Do not short circuit any of the contacts in the battery pocket, this could result in injury or property damage.

Do not operate the Desktop Cradle if it has been dropped or damaged in any way. Return the Desktop Cradle to Honeywell for repair.

Storing the Desktop Cradle

Disconnect Desktop Cradle from the AC power source by pulling the plug; not the cord.

Maintaining the Desktop Cradle

Service should be performed by trained persons only. Return the Desktop Cradle to Honeywell.

Caring for Batteries

Do not dispose of batteries into a fire. Burning will generate hazardous vapors and may cause the battery to explode. Failure to observe this warning may result in injury from inhalation of vapors or burns from flying debris.

Do not immerse batteries in water or any other liquid. Contact [Technical Assistance](#) for assistance if batteries are immersed.

Do not disassemble or perform modifications to the battery. There are no user serviceable components in the battery.

Do not place battery into pocket or toolbox with conductive objects (coins, keys, tools, etc.).

A battery placed on damp ground or grass could be electrically shorted. Lay the battery on its side when not in use.

Do not store batteries above 140°F (60°C) for extended periods.

Failure to observe these warnings could result in injury or damage to the battery from rapid discharge of energy or overheating of the battery.

Electrical Shock Hazards

The following precautions should be observed to avoid the risk of electrical shock hazards associated with charging batteries:

The Desktop Cradle has been designed for indoor use only. Do not operate outdoors or in extremely high humidity environments. Do not expose Desktop Cradle to rain, snow or wet conditions.

Unplug the Desktop Cradle from power source before cleaning. Use only mild detergent with a slightly damp cloth to clean the outside of the Desktop Cradle. Do not use solvents or flammable cleaners. Allow the case to dry fully before using again.

Use of attachments or accessories not recommended by Honeywell could result in fire, electric shock or injury.

This appliance must be properly grounded. If it should malfunction or break down, grounding provides a path of least resistance for electric current to reduce the risk of electric shock. This appliance is equipped with a cord having an equipment grounding conductor and ground outlet that is properly installed and grounded in accordance with all local codes and ordinances. Do not operate the Desktop Cradle with a damaged AC cord or plug. Honeywell does not recommend the use of any extension cord with the Desktop Cradle.

The Desktop Cradle has been designed for use on a nominal 100 or 120 volt or nominal 220 or 240 volt circuit and has a grounding attachment plug. The plug is an IEC configuration that is appropriate for your country and regulations. Make sure that the appliance is connected to an outlet having a configuration similar to the plug. No adapter should be used with this appliance. Improper connection of the equipment-grounding conductor can result in a risk of electric shock.

Check with a qualified electrician or service person if you are in doubt as to whether the outlet is properly grounded. Do not modify the plug provided with the appliance. If it will not fit in the outlet, have a proper outlet installed by a qualified electrician.

Do not disassemble the Desktop Cradle. It contains no user serviceable parts.

Chapter 4: Technical Assistance

If you need assistance installing or troubleshooting your device, please contact us by using one of the methods below:

Knowledge Base: www.hsmknowledgebase.com

Our Knowledge Base provides thousands of immediate solutions. If the Knowledge Base cannot help, our Technical Support Portal (see below) provides an easy way to report your problem or ask your question.

Technical Support Portal: www.hsmsupportportal.com

The Technical Support Portal not only allows you to report your problem, but it also provides immediate solutions to your technical issues by searching our Knowledge Base. With the Portal, you can submit and track your questions online and send and receive attachments.

Web form: www.hsmcontactsupport.com

You can contact our technical support team directly by filling out our online support form. Enter your contact details and the description of the question/problem.

Telephone: www.honeywellaidc.com/locations

For our latest contact information, please check our website at the link above.

Product Service and Repair

Honeywell International Inc. provides service for all of its products through service centers throughout the world. To obtain warranty or non-warranty service, please visit www.honeywellaidc.com and select **Support > Contact Service and Repair** to see your region's instructions on how to obtain a Return Material Authorization number (RMA #). You should do this prior to returning the product.

Limited Warranty

Honeywell International Inc. ("HII") warrants its products to be free from defects in materials and workmanship and to conform to HII's published specifications applicable to the products purchased at the time of shipment. This warranty does not cover any HII product which is (i) improperly installed or used; (ii) damaged by accident or negligence, including failure to follow the proper maintenance, service, and cleaning schedule; or (iii) damaged as a result of (A) modification or alteration by the purchaser or other party, (B) excessive voltage or current supplied to or drawn from the interface connections, (C) static electricity or electro-static discharge, (D) operation under conditions beyond the specified operating parameters, or (E) repair or service of the product by anyone other than HII or its authorized representatives.

This warranty shall extend from the time of shipment for the duration published by HII for the product at the time of purchase ("Warranty Period"). Any defective product must be returned (at purchaser's expense) during the Warranty Period to HII factory or authorized service center for inspection. No product will be accepted by HII without a Return Materials Authorization, which may be obtained by contacting HII. In the event that the product is returned to HII or its authorized service center within the Warranty Period and HII determines to its satisfaction that the product is defective due to defects in materials or workmanship, HII, at its sole option, will either repair or replace the product without charge, except for return shipping to HII.

EXCEPT AS MAY BE OTHERWISE PROVIDED BY APPLICABLE LAW, THE FOREGOING WARRANTY IS IN LIEU OF ALL OTHER COVENANTS OR WARRANTIES, EITHER EXPRESSED OR IMPLIED, ORAL OR WRITTEN, INCLUDING, WITHOUT LIMITATION, ANY IMPLIED WARRANTIES OF MERCHANTABILITY OR FITNESS FOR A PARTICULAR PURPOSE, OR NON-INFRINGEMENT.

HII'S RESPONSIBILITY AND PURCHASER'S EXCLUSIVE REMEDY UNDER THIS WARRANTY IS LIMITED TO THE REPAIR OR REPLACEMENT OF THE DEFECTIVE PRODUCT WITH NEW OR REFURBISHED PARTS. IN NO EVENT

SHALL HII BE LIABLE FOR INDIRECT, INCIDENTAL, OR CONSEQUENTIAL DAMAGES, AND, IN NO EVENT, SHALL ANY LIABILITY OF HII ARISING IN CONNECTION WITH ANY PRODUCT SOLD HEREUNDER (WHETHER SUCH LIABILITY ARISES FROM A CLAIM BASED ON CONTRACT, WARRANTY, TORT, OR OTHERWISE) EXCEED THE ACTUAL AMOUNT PAID TO HII FOR THE PRODUCT. THESE LIMITATIONS ON LIABILITY SHALL REMAIN IN FULL FORCE AND EFFECT EVEN WHEN HII MAY HAVE BEEN ADVISED OF THE POSSIBILITY OF SUCH INJURIES, LOSSES, OR DAMAGES. SOME STATES, PROVINCES, OR COUNTRIES DO NOT ALLOW THE EXCLUSION OR LIMITATIONS OF INCIDENTAL OR CONSEQUENTIAL DAMAGES, SO THE ABOVE LIMITATION OR EXCLUSION MAY NOT APPLY TO YOU.

All provisions of this Limited Warranty are separate and severable, which means that if any provision is held invalid and unenforceable, such determination shall not affect the validity of enforceability of the other provisions hereof. Use of any peripherals not provided by the manufacturer may result in damage not covered by this warranty. This includes but is not limited to: cables, power supplies, cradles, and docking stations. HII extends these warranties only to the first end-users of the products. These warranties are non-transferable.

The duration of the limited warranty for the HX2 is 1 year.

The duration of the limited warranty for the HX2 Desktop Cradle is 1 year.

The duration of the limited warranty for the HX2 Battery Charger is 1 year.

The duration of the limited warranty for the HX2 2000mAh Li-Ion and 4000mAh Li-Ion Battery is 6 months.

The duration of the limited warranty for the HX2 Ring Scanner and Ring Imager is 1 year.

The duration of the limited warranty for the HX2 AC power supply and cables is 1 year.

The duration of the limited warranty for the HX2 cables (USB, Serial, Communication, Power) is 1 year.

The duration of the limited warranty for the HX2 fabric accessories (e.g., belt, case, straps) is 90 days.



Honeywell Scanning & Mobility
9680 Old Bailes Road
Fort Mill, SC 29707
www.honeywellaidc.com

E-EQ-HX20GWW
Rev R
10/12